

LEDEEN Self-Contained Hydraulic Actuators

Designed to provide reliable emergency shutdown (ESD) of any quarter-turn valve when an external power supply is not available or dependable. This package combines Cameron's powerful LEDEEN® scotch-yoke, hydraulic spring return actuator with a compact self-contained control



Self-Contained Hydraulic Actuator

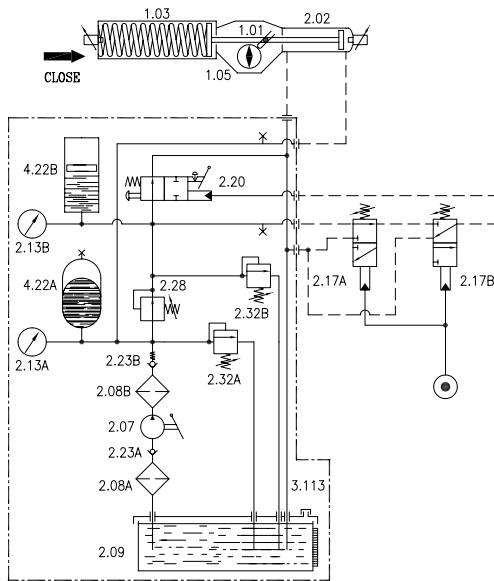
The simplicity of the self-contained hydraulic actuator is the basis for its high reliability. By utilizing a hand pump to develop hydraulic pressure, a powerful fail-safe spring is compressed, placing the actuator and pipeline valve in its normal operating position. To trip the system, a pressure sensor provides continuous monitoring of pipeline conditions to detect and respond to any abnormal conditions, quickly closing the pipeline valve.

Standard Features

- Fail-safe close or open (specify with order)
- Manifold-mounted components of anodized marine-grade aluminum
- Dual accumulators for thermal compensation of power and control circuits
- Stainless steel adjustable pressure sensor for ESD monitoring
- Bright red-colored trip lever for local manual operation for ESD
- Stainless steel hydraulic reservoir with sight glass
- Scotch-yoke actuator for high breakaway torque output
- Mechanical indicator for local verification of valve position
- Easy to adjust open and close travel stops

Optional Features

- Remote trip with solenoid
- Lockable stainless steel control enclosure



- | | |
|-------|--|
| 1.01 | Frame |
| 1.03 | Spring Container |
| 1.05 | Position Indicator |
| 2.02 | Hydraulic Cylinder |
| 2.07 | Hand Pump |
| 2.08 | Oil Filter |
| 2.09 | Oil Tank |
| 2.13 | Pressure Gauge |
| 2.17A | Hydraulic Piloted Valve (High-Pressure Set) |
| 2.17B | Hydraulic Piloted Valve (Low-Pressure Set) |
| 2.20 | Hydraulic Piloted Valve with Manual Override |
| 2.23 | Check Valve |
| 2.28 | Pressure Regulator |
| 2.32 | Safety Valve |
| 3.113 | Filling Cap |
| 4.22A | Accumulator (High Pressure) |
| 4.22B | Accumulator (Low Pressure) |

3250 Briarpark Drive, Suite 300
Houston, TX 77042
USA
Tel 1 281 499 8511