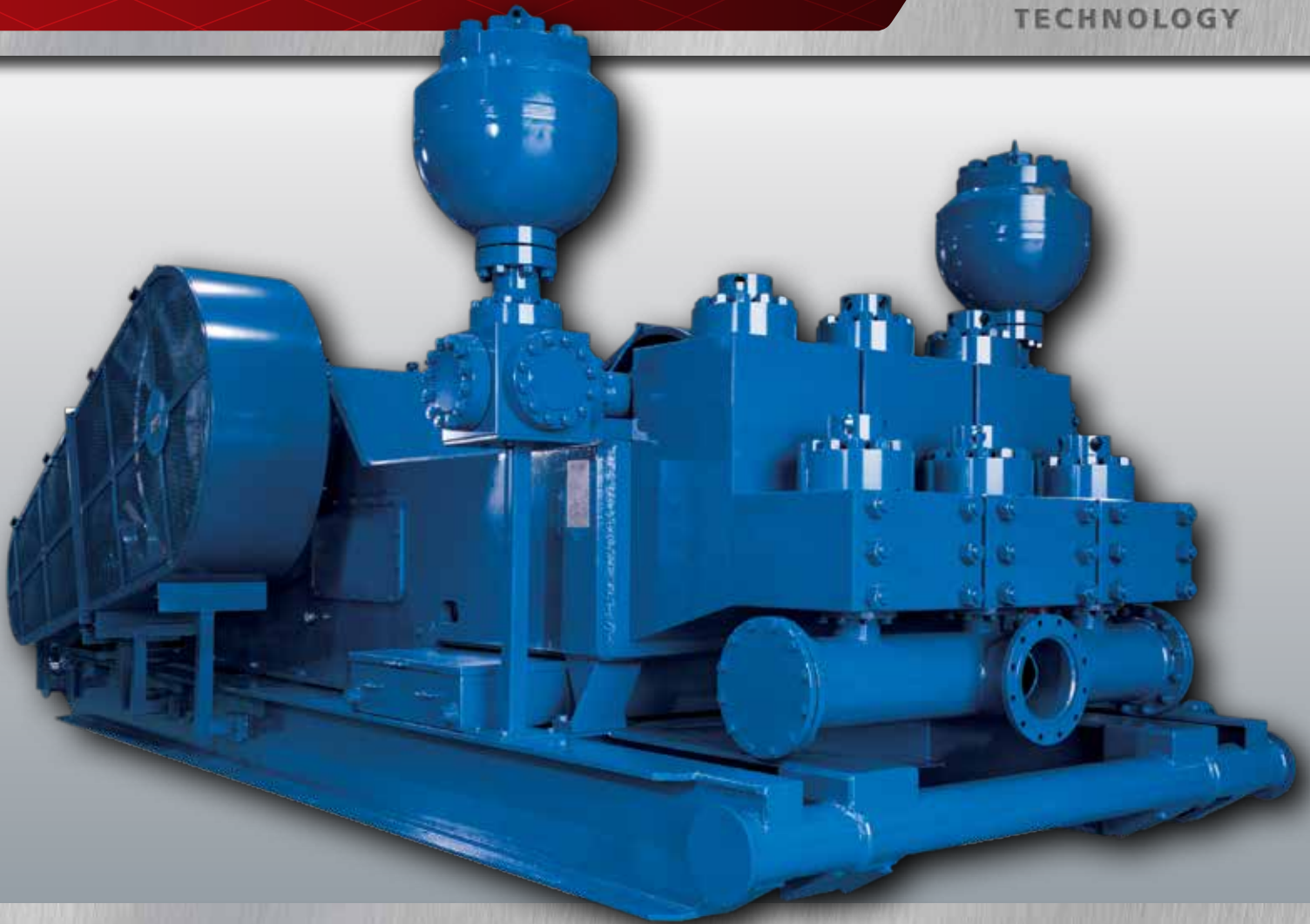


# Mud Pumps

High-performance, robust mud pumps for onshore and offshore drilling applications.

TECHNOLOGY





# Table of Contents

LEWCO Mud Pumps.....	2
LEWCO Mud Pumps Features.....	3
LEWCO WH-Series Mud Pumps.....	6
LEWCO W-Series Mud Pumps.....	10

## LEWCO Mud Pumps

Cameron manufactures high-performance, robust LEWCO™ mud pumps for onshore and offshore oil and gas drilling applications. Each mud pump features a one-piece, forged and fabricated alloy steel crankshaft for smooth operation and enhanced longevity. In addition, LEWCO mud pumps include a welded steel power frame, forged alloy steel pinions and gears, and an externally mounted lubrication pump powered by an independent externally mounted electric motor. Prior to delivery, LEWCO mud pumps are tested in our quality control facility to verify performance expectations.



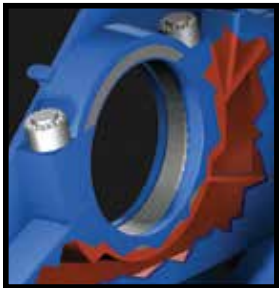
For maximized drilling performance and efficiency, LEWCO mud pumps offer high discharge flow rates, impressive power-to-weight ratios and small footprints. Cameron can also furnish fluid end modules to match the customer's existing inventory. Cameron takes pride in their ability to provide integrated pump packages, including top or rear mount AC or DC electric drives, controls, manifolds, piping, and accessories. Pumps are installed on a heavy-duty skid or trailer mounted for portability.

# LEWCO Mud Pumps Features



## **One-Piece Forged and Fabricated Alloy Steel Crankshaft**

The power balanced crankshaft reduces noise and vibration and extends the life of the bearings and crankshaft. Rather than using a multipiece bolted component, the LEWCO crankshaft is made of one-piece, forged and fabricated alloy steel construction. Its bearings are lubricated via drilled internal passageways for increased life.



## **Welded Steel Power Frame**

The mud pump power frame is engineered for performance, reliability and toughness. LEWCO mud pumps come mounted on a heavy-duty oilfield skid for mobility and increased alignment capability, reducing component wear caused by internal stresses.



## **External Power End Lubrication System**

To assure superior lubrication, even at low operating speeds, the power end lubrication system is driven by an external AC motor; which powers an external positive displacement oil pump that force-feeds bearings, upper/lower crosshead slides and gears.

## LEWCO Mud Pumps Features *(continued)*



### **Fluid End Modules**

Available in one or two-piece configurations, fluid end modules are manufactured from forged, heat-treated steel blocks, for strength and fatigue resistance. Fluid end expendables are readily available from domestic and international Cameron facilities.



### **Pinions and Gears**

Pinion and main gears are manufactured from forged, alloy steel for strength and durability, and meet AGMA 11 specifications.



### **Steel Connecting Rods**

The LEWCO rolled plate, low-carbon steel connecting rods maintain precise alignment between the crankshaft and crosshead under maximum load. These rods feature double-row cylindrical roller bearings in the crosshead end and single-row cylindrical bearings in the crankshaft end, reducing wear and friction under severe operating conditions.



### **Discharge Manifold and Strainer Cross**

Manufactured from forged, heat-treated steel, single-piece discharge manifolds improve module maintenance procedures. Discharge strainer crosses are manufactured from forged, alloy steel blocks and are available in working pressures of 3000, 5000, and 7500 psi.



### **Threaded Cylinder Heads and Valve Covers**

Threaded cylinder heads and valve covers provide quick and easy access to valves and liners.



### **Super Nuts on Main Bearing Cap**

Super nuts, used to secure main bearing caps, eliminate special tool requirements when performing maintenance procedures.

## LEWCO WH-Series Mud Pumps



### **Smaller Footprints. More Horsepower.**

#### **WH-Series: 1300 to 2000 hp rating**

Developed for increased mobility, the WH-Series mud pumps deliver high performance in a compact design. Featuring reduced footprints and less weight, the WH-Series mud pumps are well suited for land applications, where space is limited. LEWCO mud pumps feature a power-balanced, single-piece forged steel crankshaft for smooth operation.



WH-1000 Triplex Piston Model — Continuous Duty Performance Data								
Stroke, in (mm): 9 (228.6)			Gear Ratio: 4.43			Rated hp (kW): 1000 (746) @ 160 Spm		
PUMP SPEED (Spm)			160	140	120	100	80	60
MAXIMUM INPUT HP (kW) rating <sup>1</sup>			1000 (746)	875 (652)	750 (559)	625 (466)	500 (373)	375 (280)
LINER SIZE in (mm)	MAX DISCHARGE PRESSURE psi (kg/cm <sup>2</sup> )	VOLUME/ STROKE gal (l) per revolution	OUTPUT gal(l)/min <sup>2</sup>					
7 (177.8)	2143 (150.7)	4.498 (17.026)	720 (2724)	630 (2384)	540 (2043)	450 (1703)	360 (1362)	270 (1022)
6-1/2 (165.1)	2486 (174.8)	3.879 (14.680)	621 (2349)	543 (2055)	465 (1762)	388 (1468)	310 (1175)	233 (881)
6 (152.4)	2917 (205.1)	3.305 (12.509)	529 (2002)	463 (1751)	397 (1501)	330 (1251)	264 (1001)	198 (751)
5-1/2 (139.7)	3472 (244.1)	2.777 (10.511)	444 (1682)	389 (1472)	333 (1261)	278 (1051)	222 (841)	167 (631)
5 (127.0)	4201 (295.4)	2.295 (8.687)	367 (1390)	321 (1216)	275 (1042)	229 (869)	184 (695)	138 (521)
4-1/2 (114.3)	5186 (364.6)	1.859 (7.036)	297 (1126)	260 (985)	223 (844)	186 (704)	149 (563)	112 (422)
4 (101.6)	5000 (351.5)	1.469 (5.559)	235 (890)	206 (778)	176 (667)	147 (556)	118 (445)	88 (334)

<sup>1</sup>Based on 90% mechanical efficiency <sup>2</sup>Based on 100% volumetric efficiency  
All specifications are subject to change. Information important to a particular application should be verified by Cameron.

WH-1312 Triplex Piston Model – Continuous Duty Performance Data								
Stroke, in (mm): 12 (304.8)			Gear Ratio: 4.43			Rated hp (kW): 1300 (969) @ 130 Spm		
PUMP SPEED (Spm)			130	110	90	70	50	30
MAXIMUM INPUT HP (kW) rating <sup>1</sup>			1300 (969)	1100 (820)	900 (671)	700 (522)	500 (373)	300 (224)
LINER SIZE in (mm)	MAX DISCHARGE PRESSURE psi (kg/cm <sup>2</sup> )	VOLUME/ STROKE gal (l) per revolution	OUTPUT gal(l)/min <sup>2</sup>					
6-3/4 (171.5)	2766 (194.5)	5.577 (21.108)	725 (2744)	613 (2322)	502 (1900)	390 (1478)	279 (1056)	167 (633)
6-1/2 (165.1)	2983 (209.7)	5.171 (19.574)	672 (2545)	569 (2153)	465 (1762)	362 (1370)	259 (979)	155 (587)
6 (152.4)	3501 (246.1)	4.406 (16.678)	573 (2168)	485 (1835)	397 (1501)	308 (1168)	220 (834)	132 (500)
5-1/2 (139.7)	4166 (292.9)	3.703 (14.014)	481 (1822)	407 (1542)	333 (1261)	259 (981)	185 (701)	111 (420)
5 (127.0)	5000 (351.5)	3.060 (11.582)	398 (1506)	337 (1274)	275 (1042)	214 (811)	153 (579)	92 (347)

<sup>1</sup>Based on 90% mechanical efficiency <sup>2</sup>Based on 100% volumetric efficiency  
All specifications are subject to change. Information important to a particular application should be verified by Cameron.

## LEWCO WH-Series Mud Pumps *(continued)*

WH-1612 Triplex Piston Model – Continuous Duty Performance Data								
Stroke, in (mm): 12 (304.8)			Gear Ratio: 4.41			Rated hp (kW): 1600 (1193) @ 120 Spm		
PUMP SPEED (Spm)			120	110	100	90	80	70
MAXIMUM INPUT HP (kW) rating <sup>1</sup>			1600 (1193)	1467 (1094)	1333 (994)	1200 (895)	1067 (795)	933 (696)
LINER SIZE in (mm)	MAX DISCHARGE PRESSURE psi (kg/cm <sup>2</sup> ) <sup>3</sup>	VOLUME/ STROKE gal (l) per revolution	OUTPUT gal(l)/min <sup>2</sup>					
7-1/2 (190.5) <sup>4</sup>	2987 (210.0)	6.885 (26.060)	826 (3127)	757 (2867)	688 (2606)	620 (2346)	551 (2085)	482 (1824)
7 (177.8)	3429 (241.1)	5.998 (22.701)	720 (2724)	660 (2497)	600 (2270)	540 (2043)	480 (1816)	420 (1589)
6-1/2 (165.1)	3997 (279.6)	5.171 (19.574)	621 (2349)	569 (2153)	517 (1958)	465 (1762)	414 (1566)	362 (1370)
6 (152.4)	4668 (328.2)	4.406 (16.678)	529 (2002)	485 (1835)	441 (1668)	397 (1501)	353 (1334)	308 (1168)
5-1/2 (139.7)	5555 (390.6)	3.703 (14.014)	444 (1682)	407 (1542)	370 (1402)	333 (1261)	296 (1121)	259 (981)
5 (127.0)	6722 (472.6)	3.060 (11.582)	367 (1390)	337 (1274)	306 (1158)	275 (1042)	245 (927)	214 (811)
4-1/2 (114.3)	7500 (527.3)	2.479 (9.381)	297 (1126)	273 (1032)	248 (938)	223 (844)	198 (751)	174 (657)

<sup>1</sup>Based on 90% mechanical efficiency <sup>2</sup>Based on 100% volumetric efficiency <sup>3</sup>Pressures greater than 5000 psi require high-pressure fluid ends

<sup>4</sup>Liner is induction-hardened, therefore liner life is reduced

All specifications are subject to change. Information important to a particular application should be verified by Cameron.

WH-2012 Triplex Piston Model – Continuous Duty Performance Data								
Stroke, in (mm): 12 (304.8)			Gear Ratio: 4.41			Rated hp (kW): 2000 (1491) @ 140 Spm		
PUMP SPEED (Spm)			140	130	120	110	100	90
MAXIMUM INPUT HP (kW) rating <sup>1</sup>			2000 (1491)	1857 (1385)	1714 (1278)	1571 (1172)	1429 (1065)	1286 (959)
LINER SIZE in (mm)	MAX DISCHARGE PRESSURE psi (kg/cm <sup>2</sup> ) <sup>3</sup>	VOLUME/ STROKE gal (l) per revolution	OUTPUT gal(l)/min <sup>2</sup>					
7-1/2 (190.5) <sup>4</sup>	3201 (225.0)	6.885 (26.060)	964 (3649)	895 (3388)	826 (3127)	757 (2867)	688 (2606)	620 (2346)
7 (177.8)	3674 (258.3)	5.998 (22.701)	840 (3178)	780 (2951)	720 (2724)	660 (2497)	600 (2270)	540 (2043)
6-1/2 (165.1)	4261 (299.6)	5.171 (19.574)	724 (2741)	672 (2545)	621 (2349)	569 (2153)	517 (1958)	465 (1762)
6 (152.4)	5001 (351.6)	4.406 (16.678)	617 (2335)	573 (2168)	529 (2002)	485 (1835)	441 (1668)	397 (1501)
5-1/2 (139.7)	5952 (418.5)	3.703 (14.014)	518 (1962)	481 (1822)	444 (1682)	407 (1542)	370 (1402)	333 (1261)
5 (127.0)	7202 (506.3)	3.060 (11.582)	428 (1622)	398 (1506)	367 (1390)	337 (1274)	306 (1158)	275 (1042)
4-1/2 (114.3)	7500 (527.3)	2.479 (9.381)	347 (1314)	322 (1220)	297 (1126)	273 (1032)	248 (938)	223 (844)

<sup>1</sup>Based on 90% mechanical efficiency <sup>2</sup>Based on 100% volumetric efficiency <sup>3</sup>Pressures greater than 5000 psi require high-pressure fluid ends

<sup>4</sup>Liner is induction-hardened, therefore liner life is reduced

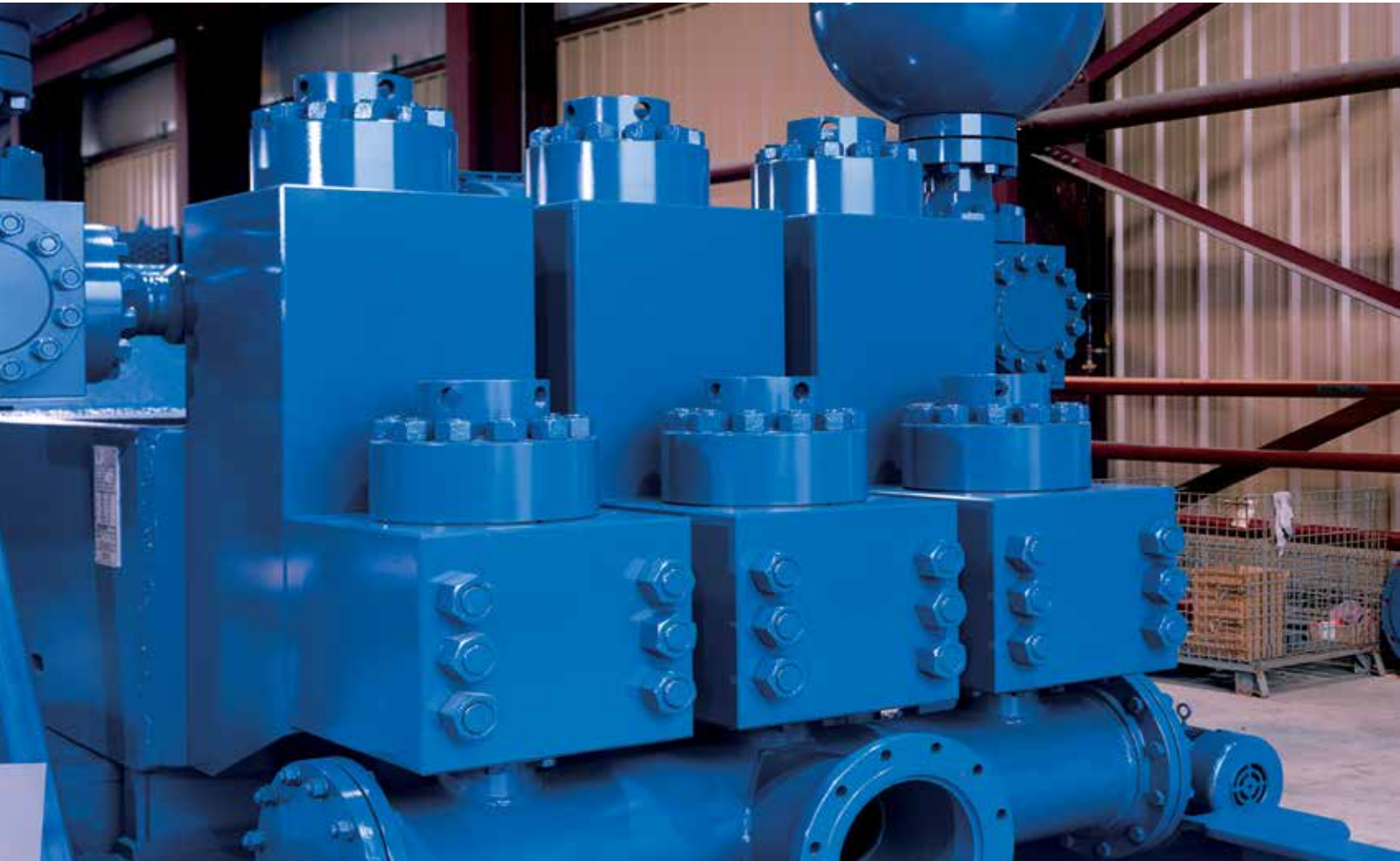
All specifications are subject to change. Information important to a particular application should be verified by Cameron.

WH-2214 Triplex Piston Model — Continuous Duty Performance Data								
Stroke, in (mm): 14 (355.6)			Gear Ratio: 4.84			Rated hp (kW): 2200 (1641) @ 120 Spm		
PUMP SPEED (Spm)			120	110	100	90	80	70
MAXIMUM INPUT HP (kW) rating <sup>1</sup>			2200 (1641)	2017 (1504)	1833 (1367)	1650 (1230)	1467 (1094)	1283 (957)
LINER SIZE in (mm)	MAX DISCHARGE PRESSURE psi (kg/cm <sup>2</sup> )	VOLUME/ STROKE gal (l) per revolution	OUTPUT gal(l)/min <sup>2</sup>					
7-1/2 (190.5)	3521 (247.5)	8.032 (30.403)	964 (3649)	884 (3345)	803 (3041)	723 (2737)	643 (2432)	562 (2128)
7 (177.8)	4042 (284.2)	6.997 (26.484)	840 (3178)	770 (2914)	700 (2649)	630 (2384)	560 (2119)	490 (1854)
6-1/2 (165.1)	4687 (329.6)	6.033 (22.836)	724 (2741)	664 (2512)	603 (2284)	543 (2055)	483 (1827)	422 (1599)
6 (152.4)	5501 (386.6)	5.141 (19.458)	617 (2335)	565 (2141)	514 (1946)	463 (1751)	411 (1557)	360 (1362)
5-1/2 (139.7)	6547 (460.3)	4.320 (16.350)	518 (1962)	475 (1799)	432 (1635)	389 (1472)	346 (1308)	302 (1145)
5 (127.0)	7500 (527.3)	3.570 (13.512)	428 (1622)	393 (1486)	357 (1351)	321 (1216)	286 (1081)	250 (946)

<sup>1</sup>Based on 90% mechanical efficiency    <sup>2</sup>Based on 100% volumetric efficiency  
All specifications are subject to change. Information important to a particular application should be verified by Cameron.



## LEWCO W-Series Mud Pumps



### **Built Strong to Last Long.**

#### **W-Series: 1700 to 3000 hp rating**

LEWCO W-Series mud pumps are built for durability and longevity and are designed with a welded power steel frame that features supplementary steel for operational efficiency. The W-Series includes robust, high pressure low maintenance pumps to increase drilling performance. LEWCO mud pumps feature a power balanced single piece forged and fabricated alloy steel crankshaft for smooth operation. While the WH-Series are well suited for land applications; W-series are ideal for offshore applications.

W-1100 Triplex Piston Model – Continuous Duty Performance Data								
Stroke, in (mm): 10 (254.0)			Gear Ratio: 4.43			Rated hp (kW): 1100 (820) @ 140 Spm		
PUMP SPEED (Spm)			140	125	115	105	95	85
MAXIMUM INPUT HP (kW) rating <sup>1</sup>			1,100 (820)	982 (732)	904 (674)	825 (615)	746 (557)	668 (498)
LINER SIZE in (mm)	MAX DISCHARGE PRESSURE psi (kg/cm <sup>2</sup> )	VOLUME/ STROKE gal (l) per revolution	OUTPUT gal(l)/min <sup>2</sup>					
7 (177.8)	2425 (176.8)	4.998 (18.917)	700 (2649)	625 (2365)	575 (2176)	525 (1986)	475 (1797)	425 (1608)
6-1/2 (165.1)	2812 (205.1)	4.309 (16.311)	603 (2284)	539 (2039)	496 (1876)	452 (1713)	409 (1550)	366 (1387)
6 (152.4)	3301 (240.7)	3.672 (13.898)	514 (1946)	459 (1737)	422 (1598)	386 (1459)	349 (1320)	312 (1181)
5-1/2 (139.7)	3928 (286.4)	3.085 (11.679)	432 (1635)	386 (1460)	355 (1343)	324 (1226)	293 (1110)	262 (993)
5 (127.0)	4753 (276.2)	2.550 (9.652)	357 (1351)	319 (1207)	293 (1110)	268 (1014)	242 (917)	217 (820)
4-1/2 (114.3)	5000 (351.5)	2.065 (7.818)	289 (1095)	258 (977)	238 (899)	217 (821)	196 (743)	176 (665)

<sup>1</sup>Based on 90% mechanical efficiency <sup>2</sup>Based on 100% volumetric efficiency  
All specifications are subject to change. Information important to a particular application should be verified by Cameron.

W-1712 Triplex Piston Model – Continuous Duty Performance Data								
Stroke, in (mm): 12 (304.8)			Gear Ratio: 4.84			Rated hp (kW): 1700 (1268) @ 120 Spm		
PUMP SPEED (Spm)			120	110	100	90	80	70
MAXIMUM INPUT HP (kW) rating <sup>1</sup>			1700 (1268)	1558 (1162)	1417 (1056)	1275 (951)	1133 (845)	992 (739)
LINER SIZE in (mm)	MAX DISCHARGE PRESSURE psi (kg/cm <sup>2</sup> ) <sup>3</sup>	VOLUME/ STROKE gal (l) per revolution	OUTPUT gal(l)/min <sup>2</sup>					
7-1/2 (190.5) <sup>4</sup>	3174 (223.2)	6.885 (26.060)	826 (3127)	757 (2867)	688 (2606)	620 (2346)	551 (2085)	482 (1824)
7 (177.8)	3644 (256.2)	5.998 (22.701)	720 (2724)	660 (2497)	600 (2270)	540 (2043)	480 (1816)	420 (1589)
6-1/2 (165.1)	4226 (297.1)	5.171 (19.574)	621 (2349)	569 (2153)	517 (1958)	465 (1762)	414 (1566)	362 (1370)
6 (152.4)	4960 (348.7)	4.406 (16.678)	529 (2002)	485 (1835)	441 (1668)	397 (1501)	353 (1334)	308 (1168)
5-1/2 (139.7)	5902 (415.0)	3.703 (14.014)	444 (1682)	407 (1542)	370 (1402)	333 (1261)	296 (1121)	259 (981)
5 (127.0)	7142 (502.1)	3.060 (11.582)	367 (1390)	337 (1274)	306 (1158)	275 (1042)	245 (927)	214 (811)
4-1/2 (114.3)	7500 (527.3)	2.479 (9.381)	297 (1126)	273 (1032)	248 (938)	223 (844)	198 (751)	174 (657)

<sup>1</sup>Based on 90% mechanical efficiency <sup>2</sup>Based on 100% volumetric efficiency <sup>3</sup>Pressures greater than 5000 psi require high-pressure fluid ends  
<sup>4</sup>Liner is induction-hardened, therefore liner life is reduced  
All specifications are subject to change. Information important to a particular application should be verified by Cameron.

## LEWCO W-Series Mud Pumps *(continued)*

W-2214 Triplex Piston Model – Continuous Duty Performance Data								
Stroke, in (mm): 14 (355.6)			Gear Ratio: 4.82			Rated hp (kW): 2200 (1641) @ 110 Spm		
PUMP SPEED (Spm)			110	100	90	80	70	60
MAXIMUM INPUT HP (kW) rating <sup>1</sup>			2200 (1641)	2000 (1491)	1800 (1342)	1600 (1193)	1400 (1044)	1200 (895)
LINER SIZE in (mm)	MAX DISCHARGE PRESSURE psi (kg/cm <sup>2</sup> ) <sup>2</sup>	VOLUME/ STROKE gal (l) per revolution	OUTPUT gal(l)/min <sup>2</sup>					
9 (228.6) <sup>3</sup>	2667 (187.5)	11.567 (43.780)	1272 (4816)	1157 (4378)	1041 (3941)	925 (3503)	810 (3065)	694 (2627)
8-1/2 (215.9) <sup>3</sup>	2990 (210.2)	10.317 (39.051)	1135 (4296)	1032 (3905)	929 (3515)	825 (3124)	722 (2734)	619 (2343)
8 (203.2)	3376 (237.3)	9.139 (34.592)	1005 (3805)	914 (3459)	823 (3114)	731 (2768)	640 (2422)	548 (2076)
7-1/2 (190.5)	3841 (270.0)	8.032 (30.403)	884 (3345)	803 (3041)	723 (2737)	643 (2432)	562 (2128)	482 (1824)
7 (177.8)	4409 (310.0)	6.997 (26.484)	770 (2914)	700 (2649)	630 (2384)	560 (2119)	490 (1854)	420 (1589)
6-1/2 (165.1)	5114 (359.5)	6.033 (22.837)	664 (2513)	603 (2283)	543 (2055)	483 (1828)	422 (1597)	362 (1370)
6 (152.4)	6001 (421.9)	5.141 (19.460)	565 (2139)	514 (1948)	463 (1753)	411 (1556)	360 (1363)	308 (1166)
5-1/2 (139.7)	7142 (502.1)	4.320 (16.353)	475 (1798)	432 (1635)	389 (1472)	346 (1310)	302 (1143)	259 (980)
5 (127.0)	7500 (527.3)	3.570 (13.510)	393 (1487)	357 (1351)	321 (1215)	286 (1083)	250 (946)	214 (810)

<sup>1</sup>Based on 90% mechanical efficiency <sup>2</sup>Based on 100% volumetric efficiency <sup>3</sup>Requires special retention system; liner is induction-hardened, therefore liner life is reduced  
All specifications are subject to change. Information important to a particular application should be verified by Cameron.

W-2215 Triplex Piston Model – Continuous Duty Performance Data								
Stroke, in (mm): 15 (381.0)			Gear Ratio: 4.82			Rated hp (kW): 2200 (1641) @ 110 Spm		
PUMP SPEED (Spm)			110	100	90	80	70	60
MAXIMUM INPUT HP (kW) rating <sup>1</sup>			2200 (1641)	2000 (1491)	1800 (1342)	1600 (1193)	1400 (1044)	1200 (895)
LINER SIZE in (mm)	MAX DISCHARGE PRESSURE psi (kg/cm <sup>2</sup> ) <sup>2</sup>	VOLUME/ STROKE gal (l) per revolution	OUTPUT gal(l)/min <sup>2</sup>					
9 (228.6) <sup>3</sup>	2489 (175.0)	12.393 (46.907)	1363 (5160)	1239 (4691)	1115 (4222)	991 (3753)	868 (3284)	744 (2815)
8-1/2 (215.9) <sup>3</sup>	2791 (196.2)	11.054 (41.840)	1216 (4603)	1105 (4184)	995 (3766)	884 (3348)	774 (2929)	663 (2511)
8 (203.2)	3151 (221.5)	9.792 (37.063)	1077 (4077)	979 (3707)	881 (3336)	783 (2965)	685 (2595)	588 (2224)
7-1/2 (190.5)	3585 (252.0)	8.606 (32.575)	947 (3584)	861 (3258)	775 (2932)	688 (2606)	602 (2280)	516 (1955)
7 (177.8)	4115 (289.3)	7.497 (28.376)	825 (3122)	750 (2838)	675 (2554)	600 (2270)	525 (1986)	450 (1703)
6-1/2 (165.1)	4773 (335.6)	6.464 (24.467)	711 (2692)	646 (2447)	582 (2202)	517 (1958)	452 (1713)	388 (1468)
6 (152.4)	5601 (393.8)	5.508 (20.848)	606 (2293)	551 (2085)	496 (1876)	441 (1668)	386 (1459)	330 (1251)
5-1/2 (139.7)	6666 (468.7)	4.628 (17.518)	509 (1927)	463 (1752)	417 (1577)	370 (1402)	324 (1226)	278 (1051)
5 (127.0)	7500 (527.3)	3.825 (14.478)	421 (1593)	382 (1448)	344 (1303)	306 (1158)	268 (1014)	229 (869)

<sup>1</sup>Based on 90% mechanical efficiency <sup>2</sup>Based on 100% volumetric efficiency <sup>3</sup>Requires special retention system; liner is induction-hardened, therefore liner life is reduced  
All specifications are subject to change. Information important to a particular application should be verified by Cameron.

W-3000 Triplex Piston Model – Continuous Duty Performance Data								
Stroke, in (mm): 16 (406.4)			Gear Ratio: 4.36			Rated hp (kW): 3000 (2237) @ 100 Spm		
PUMP SPEED (Spm)			100	90	80	70	60	50
MAXIMUM INPUT HP (kW) rating <sup>1</sup>			3000 (2237)	2700 (2013)	2400 (1790)	2100 (1566)	1800 (1342)	1500 (1119)
LINER SIZE in (mm)	MAX DISCHARGE PRESSURE psi (kg/cm <sup>2</sup> ) <sup>2</sup>	VOLUME/ STROKE gal (l) per revolution	OUTPUT gal(l)/min <sup>2</sup>					
9 (228.6) <sup>3</sup>	3501 (246.1)	13.219 (50.035)	1322 (5004)	1190 (4504)	1058 (4003)	925 (3503)	793 (3002)	661 (2502)
8-1/2 (215.9)	3925 (275.9)	11.791 (44.630)	1179 (4463)	1061 (4017)	943 (3571)	825 (3124)	707 (2678)	590 (2232)
8 (203.2)	4431 (311.5)	10.445 (39.533)	1044 (3954)	940 (3558)	836 (3163)	731 (2768)	627 (2372)	522 (1977)
7-1/2 (190.5)	5041 (354.4)	9.180 (34.746)	918 (3475)	826 (3127)	734 (2780)	643 (2432)	551 (2085)	459 (1737)
7 (177.8)	5787 (406.9)	7.997 (30.268)	800 (3027)	720 (2724)	640 (2422)	560 (2119)	480 (1816)	400 (1514)
6-1/2 (165.1)	6712 (471.9)	6.895 (26.098)	690 (2610)	621 (2349)	552 (2088)	483 (1827)	414 (1566)	345 (1305)
6 (152.4)	7500 (527.3)	5.875 (22.238)	588 (2224)	529 (2002)	470 (1779)	411 (1557)	353 (1334)	294 (1112)

<sup>1</sup>Based on 90% mechanical efficiency <sup>2</sup>Based on 100% volumetric efficiency <sup>3</sup>Requires special retention system; liner is induction-hardened, therefore liner life is reduced  
All specifications are subject to change. Information important to a particular application should be verified by Cameron.



Domestic and International Call Center  
Tel 1.832.782.6742

4601 Westway Park Blvd.  
Houston, TX 77041  
USA  
Tel 1 713 939 2211

Andøyfaret 3  
N-4623 Kristiansand S.  
Norway  
Tel 47 380 00 570

No. 100 Tuas S. Ave. 8  
Offshore Marine Centre  
Singapore 637424  
Republic of Singapore  
Tel 65 6577 1400

PO Box 127424  
Abu Dhabi,  
United Arab Emirates  
Tel 971 0 2 699-6300

5 The Heights  
Weybridge  
Surrey KT13 0NY  
UK  
Tel 44 1932 452124

Learn more about Cameron's mud pumps at:  
[www.c-a-m.com](http://www.c-a-m.com)



#### HSE Policy Statement

At Cameron, we are committed ethically, financially and personally to a working environment where no one gets hurt and nothing gets harmed.