

DVS

Double-V shear rams

APPLICATIONS

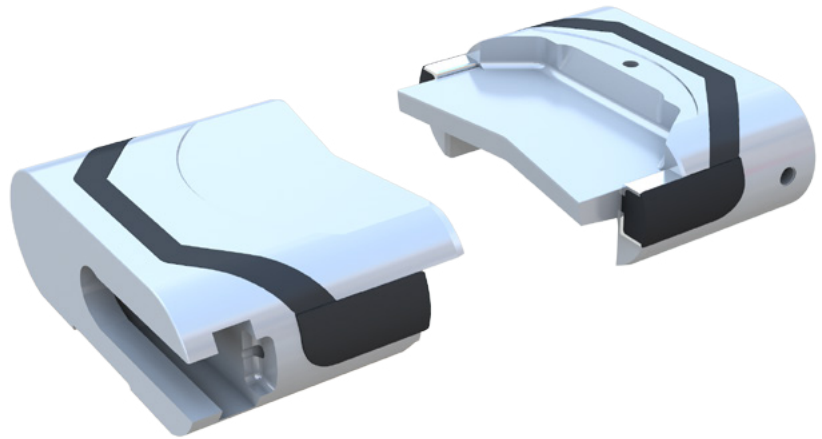
Drilling and production

BENEFITS

- Improved operational efficiency by requiring less shear force
- Increased shearing ability with greater blade widths

FEATURES

- Combined features of shearing blind rams (SBRs) and DS* dual-string shear rams
- V-shaped cutting edges that reduce required shear force
- Maximized blade widths that increase shearing capabilities
- Large-blade packer
- Compatibility with
 - U* surface ram-type BOP
 - TL* offshore ram-type BOP
 - EVO* compact offshore ram-type BOP



DVS double-V shear ram.

Cameron DVS* double-V shear rams combine the features of SBRs and DS rams into one efficient solution. Both the upper and lower DVS rams feature a V-shaped cutting edge, which enables shearing with less force required. Additionally, the maximized blade widths increase its shearing capabilities. The upper DVS ram houses a large-blade packer which seals on the front edge of the lower DVS ram blade.

Shearing action

Upon completion of shearing, the lower fish is folded over and flattened to allow the leading edge of the lower blade to seal against a blade packer.