

# 8068/8068-G ROTATING CONTROL DEVICE

## FEATURES

- Bearing can mount on conductor or diverter spool to meet application requirements
- Compatible with rotary and top drive rigs
- Large, heavy-duty tapered roller bearings provide low-torque rotation and load support
- Sealing elements available in natural rubber, nitrile, butyl, and urethane to meet application requirements
- 17 gallon low-pressure, non-circulating oiler system

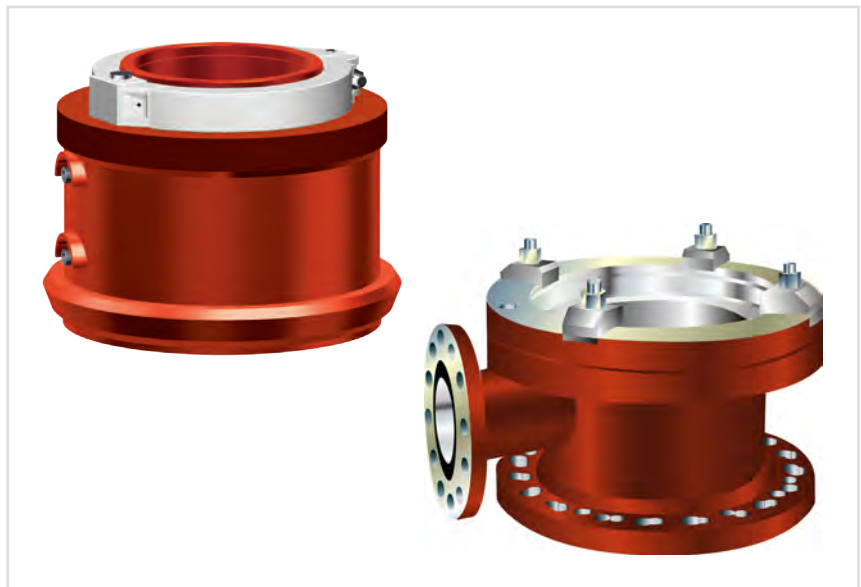
## BENEFITS

- Improves rig safety by isolating the rig floor from potentially harmful wellbore fluids and gases during drilling operations
- One piece combo sealing element provides convenience in changing elements and eliminates drive bushing with cap screws
- Simple and easy-to-maintain system

## APPLICATIONS

- Divert drilling fluids and cuttings to solids control equipment
- Gas influx and annular containment of wellbore fluids
- Geothermal drilling capable

The low pressure 8068/8068-G ROTATING CONTROL DEVICE<sup>†</sup> (8068/8068-G RCD<sup>†</sup>) is designed to provide annular pressure seal in large-diameter wells up to 30 in.



## Versatile Design, Solid Performance

A special version is available for high-temperature, geothermal wells. Both versions feature a split-body design with the bearing assembly securely attached and sealed on the mounting spool or weld-on adapter flange.

A 17 gallon low-pressure, non-circulating oiler system provides lubrication to the bearings. It is a simple, easy-to-maintain system that requires no electrical power and is energized by rig air supply.

## Sealing Element Selection

Sealing elements are available in four different elastomer compounds: natural rubber, nitrile, butyl, and urethane, each of which has performance characteristics to meet application requirements. Combo sealing elements are available from 2 $\frac{1}{8}$ -in thru 5 $\frac{1}{2}$ -in drill pipe and 5-in thru 10 $\frac{3}{4}$ -in casing. These sealing elements do not require mounting to a drive bushing, hence eliminating cap screws. Combo sealing elements are retrievable through a 17 $\frac{1}{2}$ -in rotary table.



Low-pressure, one-piece combination sealing element combines the drive bushing and sealing element to reduce replacement time and eliminate cap screws.



Clamping dogs

Weld-on mounting flange for 8068 RCD. Customer welds mounting flange directly to conductor pipe when no wellhead is in place.

### 8068 and 8068-G RCD Specifications

Rotating test pressure*	250 psi
Static test pressure*	750 psi
Maximum rotary speed	150 rpm
Maximum bearing assembly pass-through	13 $\frac{3}{4}$ in
Bearing width of RCD	27 $\frac{1}{2}$ in
Height of bearing assembly	17 in

### 8068 Spool Technical Data

Inlet Flange	Spool ID	Outlet Flange	Height
16 $\frac{1}{4}$ in 2,000 psi	16 $\frac{1}{4}$ in	9 in 3,000 psi	20 in
20 $\frac{1}{4}$ in 2,000 or 3,000 psi	20 $\frac{1}{4}$ in	9 in 3,000 psi	20 in

### 8068 Weld-On Mounting Flange Data

Casing Size	Height	Flange ID
20-in mounting flange	6 in	26 $\frac{3}{32}$ in
30-in/36-in mounting flange	3 in	26 $\frac{3}{32}$ in
30-in mounting flange with removable adapter ring	3 $\frac{1}{4}$ in	28 $\frac{3}{4}$ in

### 8068-G Spool Technical Data

Inlet Flange	Spool ID	Outlet Flange	Height
13 $\frac{3}{8}$ in 3,000 psi	13 $\frac{3}{8}$ in	9 in 2,000 or 3,000 psi	20 in
20 in 2,000 or 3,000 psi	20 $\frac{1}{4}$ in	9 in 2,000 or 3,000 psi	20 in

\*Pressure ratings apply only to RCDs equipped with PolyPak seals.

Pressure ratings for the bearing and internal seals have been determined through in-house lab testing with a test plug installed. Due to the uncontrolled environment of well drilling operations, M-I SWACO, its operating units, agents, and affiliates make no warranty, either expressed or implied, on the pressure ratings contained herein. M-I SWACO does not, under any circumstances, recommend that its RCDs be used as primary blowout prevention equipment. Pressure ratings vary by sealing elements material and drill pipe size. Pressure ratings do not include sealing element. Contact M-I SWACO for application needs.

**Mi SWACO**  
A Schlumberger Company

This information is supplied solely for informational purposes and M-I SWACO makes no guarantees or warranties, either expressed or implied, with respect to the accuracy and use of this data. All product warranties and guarantees shall be governed by the Standard Terms of Sale. Nothing in this document is legal advice or is a substitute for competent legal advice.

P.O. Box 42842  
Houston, Texas 77242-2842  
www.miswaco.slb.com  
Email: questions@miswaco.slb.com